

# ValuNet Whole Home DVR (WHDVR) Management from Anywhere

## Contents

Browser Access .....	2
Home Page .....	2
Select a WHDVR .....	2
Search.....	3
Recordings.....	4
Current Recordings .....	4
Future Recordings .....	6
Series Rules .....	6
TV Guide .....	7
Logout .....	8

Created by  
Stephanie Green 1/9/2014

Edited by  
Russell Thrailkill 10/10/2016

URL Web name is: <http://mytv.valu-net.net>

## Browser Access

Open browser session and enter the URL: <http://mytv.valu-net.net> into the address bar. Please Note: Chrome does not support NPAPI plugins, which is necessary in order to continue.



Enter your assigned User ID (UID) and Password (PW) and press the 'Login' button.

## Home Page

The following Home Page screen will appear:



## Select a WHDVR

In the 'Select a Set Top Box' dropdown list you will see your associated WHDVR only:

Created by  
Stephanie Green 1/9/2014

Edited by  
Russell Thrailkill 10/10/2016



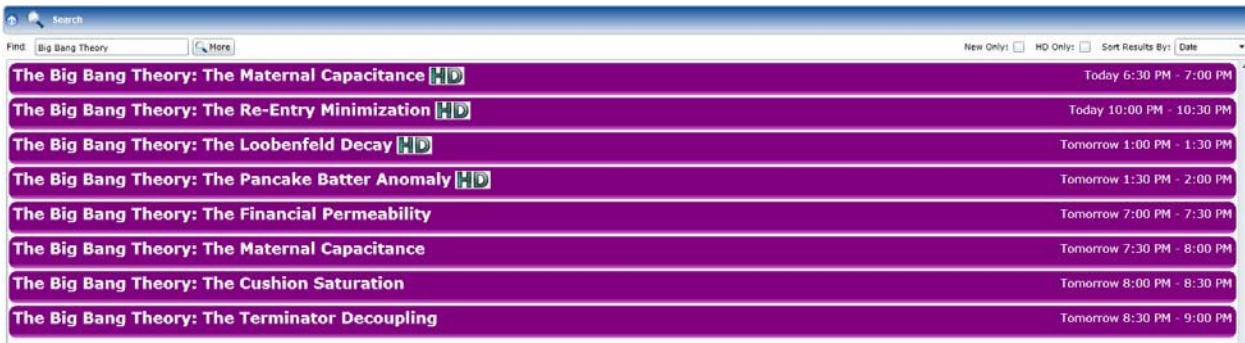
It should default to it in the list. In our case it is 'Family-Room' in the dropdown menu. If you have more than 1 WHDVR you can select between them.

## Search

In the 'Search' notice the arrow is 'down' by default:



Click on the arrow to change it to 'up' which will dropdown a 'Find' or 'Search'. In my example I have chosen to search for TV Guide listings for 'The Big Bang Theory' which will show me a list of all show times for 'Viewing' or 'Recording' ability:



You can simply click on a listing, which will expand the show time and allow you read a brief description of show detail and provide a 'Recording' button to set it up for recording in the lower right-hand corner:



When you click the 'Recording' button the follow box will appear asking you to establish either a 'On Time' recording or to record the 'Series' of parameters:

Created by  
Stephanie Green 1/9/2014

Edited by  
Russell Thrailkill 10/10/2016

The screenshot shows a dialog box titled "Setup a New Recording" with a close button (X) in the top right corner. It features two radio buttons at the top: "One Time" (selected) and "Series". Below these are several input fields: "Program Name" with the text "The Big Bang Theory", "Channel" with "43 - FOX", "Folder" with a dropdown menu showing "All Recordings" and a green plus icon, "Start Recording" with a dropdown menu showing "On Time", "Stop Recording" with a dropdown menu showing "On Time", and "Auto Tune" with a dropdown menu showing "No". At the bottom center is a "Record" button with a red circle icon.

The screenshot shows the same "Setup a New Recording" dialog box, but with the "Series" radio button selected. The "Program Name" field is now labeled "Series Name" and contains "The Big Bang Theory". The "Channel" field remains "43 - FOX". The "Folder" field is the same. The "Keep At Most" field has a dropdown menu showing "All". The "Show Type" field has a dropdown menu showing "Only New Episodes". The "Start Recording", "Stop Recording", and "Auto Tune" fields remain the same. The "Record" button now has a red circle with a white 'S' icon.

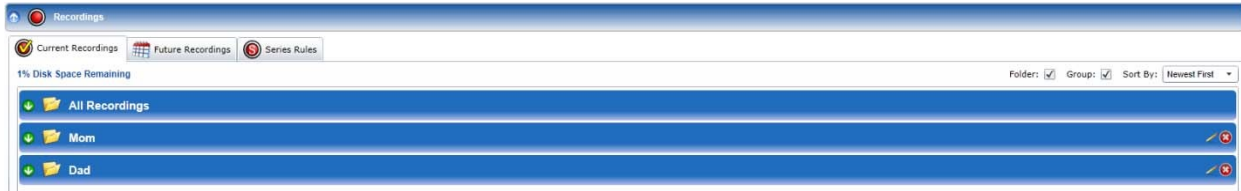
## Recordings

### Current Recordings

This is the 'Current Recordings' view of associated folders on the WHDVR:

Created by  
Stephanie Green 1/9/2014

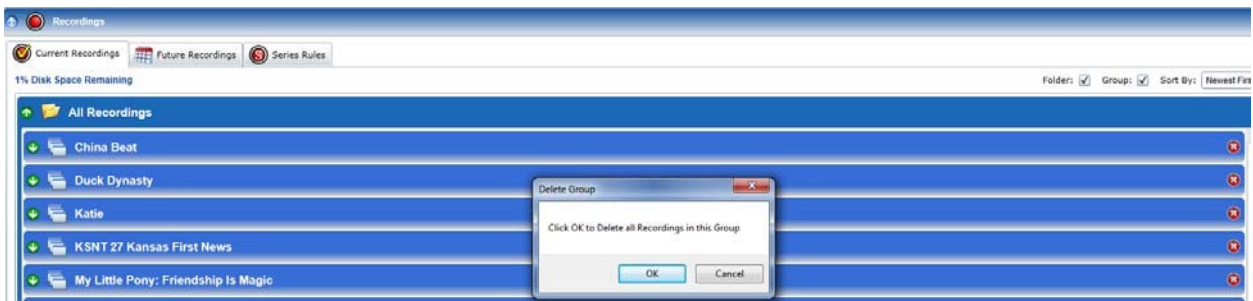
Edited by  
Russell Thrailkill 10/10/2016



You can select the 'down' arrow of the 'All Recordings' to expand your view and 'edit' any recordings or establish new recordings:



You can select the 'red X' on the right-hand margin and 'delete' and individual recording:

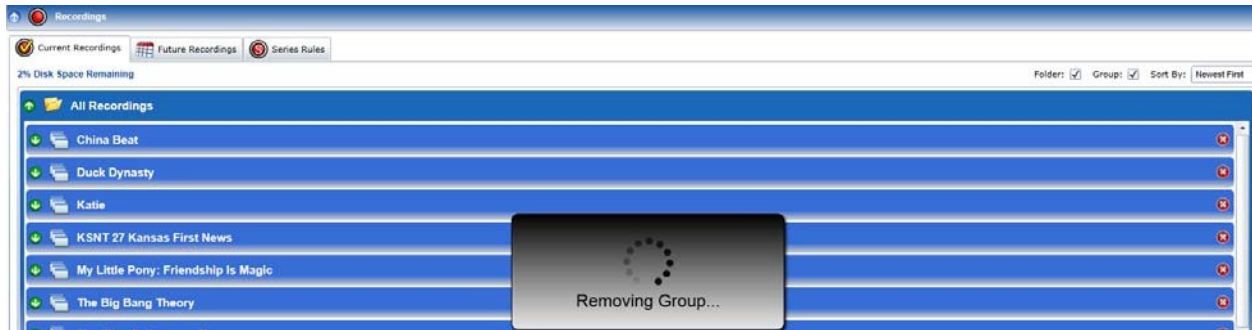


Here I am deleting the recording 'My Little Pony: Friendship is Magic'

Press 'OK' button, the 'Removing Group' pop-up will display and the recording will be removed from the list of recordings:

Created by  
Stephanie Green 1/9/2014

Edited by  
Russell Thrailkill 10/10/2016

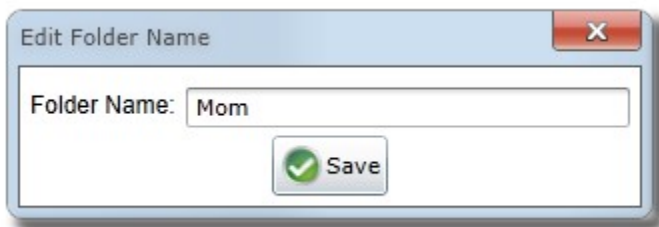


## Future Recordings

Here you can also 'rename' folders by selecting the pencil



The following pop-up will appear, simply change the name in the 'Folder Name' field and press the 'Save' button:

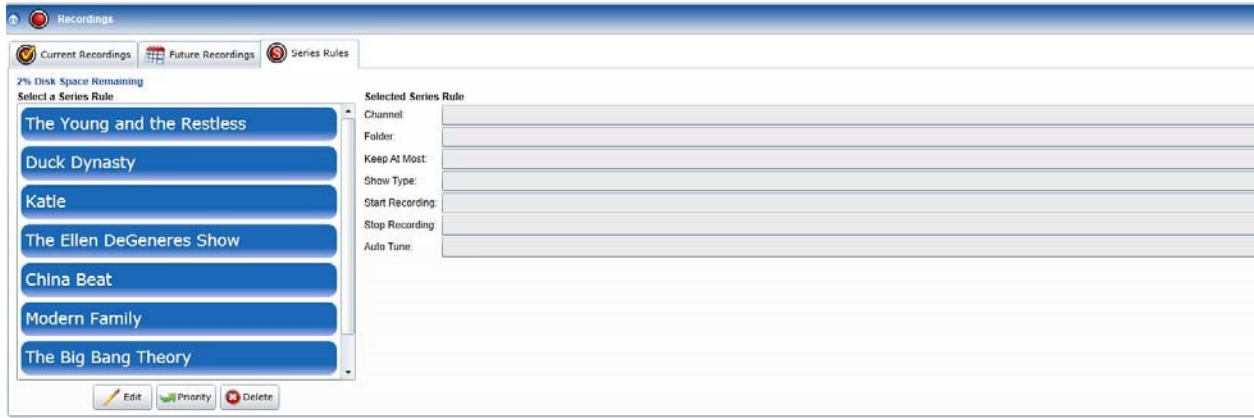


## Series Rules

Here you can select a 'Series Rule' from the list:

Created by  
Stephanie Green 1/9/2014

Edited by  
Russell Thrailkill 10/10/2016



Notice it then populates the 'Selected Series Rule' fields:



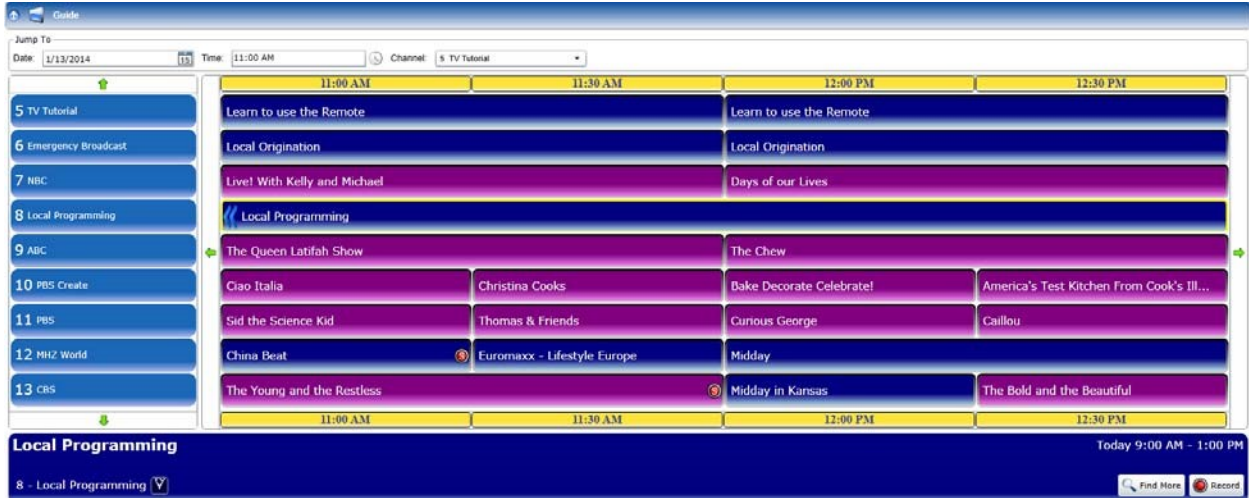
## TV Guide

Here the whole ValuNet Guide is present so you can see what is playing when and choose specific channels to establish recordings:

Created by  
Stephanie Green 1/9/2014

Edited by  
Russell Thrailkill 10/10/2016





You can click on a channel and it will provide a brief description in the bottom pane and provide a 'Record' button to set up a recording.

## Logout

In the top right-hand corner of your screen press the 'Logout' button:



Now you have the ability to manage your Whole Home DVR from any Internet connection. We hope you enjoy your experience. Questions? Contact us at 620.208.5000!

Created by  
Stephanie Green 1/9/2014

Edited by  
Russell Thrailkill 10/10/2016